

# 939 Boylston St

BACK BAY - BOSTON, MA



+/- **5,000 SF**

**EASTERN**  
LAND COMPANY

FORLEASEBOSTON.COM  
**617.286.3830**

# 939 Boylston St

BACK BAY - BOSTON, MA



+/- **5,000 SF**

**EASTERN**  
LAND COMPANY

FORLEASEBOSTON.COM  
**617.286.3830**

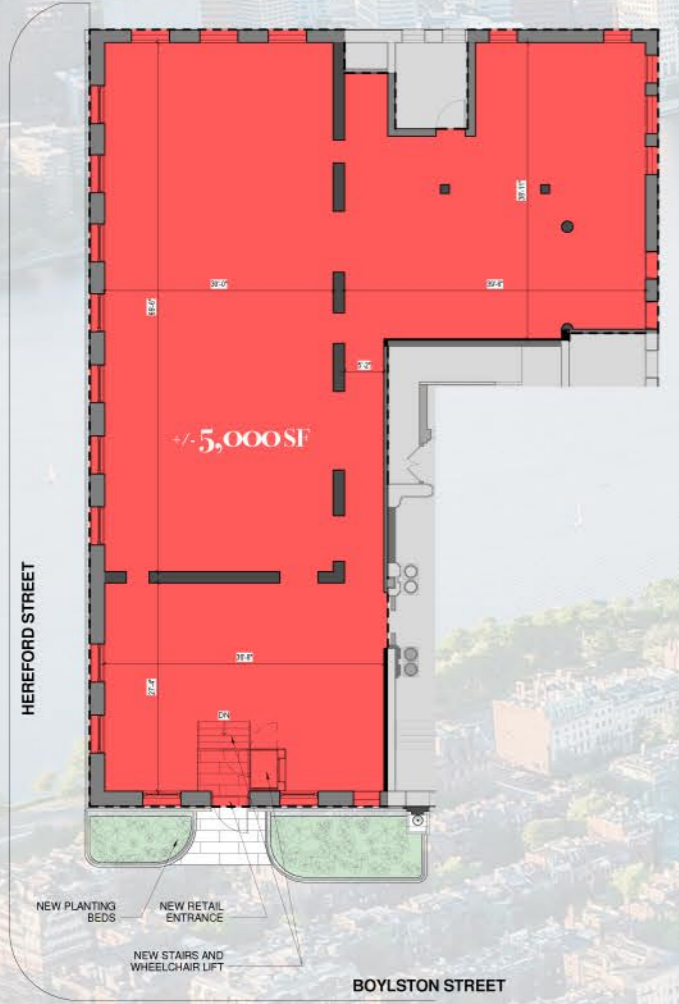
# 939 Boylston St

BACK BAY - BOSTON, MA

# 939 BOYLSTON ST

**135' of FRONTAGE ACROSS THE CORNER OF BOYLSTON STREET & HEREFORD STREET**

**RARE CORNER OPPORTUNITY AT THE BASE OF THE HISTORIC TENNIS & RACQUET CLUB**



Abercrombie & Fitch  
Champion  
MUJI  
BURTON  
DIESEL  
Reformation  
URBAN OUTFITTERS  
UNI QLO

Ministry of Supply  
BRANDY MELVILLE  
BURROW  
Tracksmith

Berklee College of Music

FREE PEOPLE  
TRADER JOE'S  
TESLA  
CHASE  
Fidelity  
Apple

**HYNES CONVENTION CENTER**  
250,000 CONV. VISITORS / YEAR

**1001 BOYLSTON ST UNDER CONSTRUCTION**  
39,000 SF RETAIL + REST.  
450,000 SF OFFICE + LAB  
CarGurus  
LEGO  
100K SF HQ 399 ROOMS

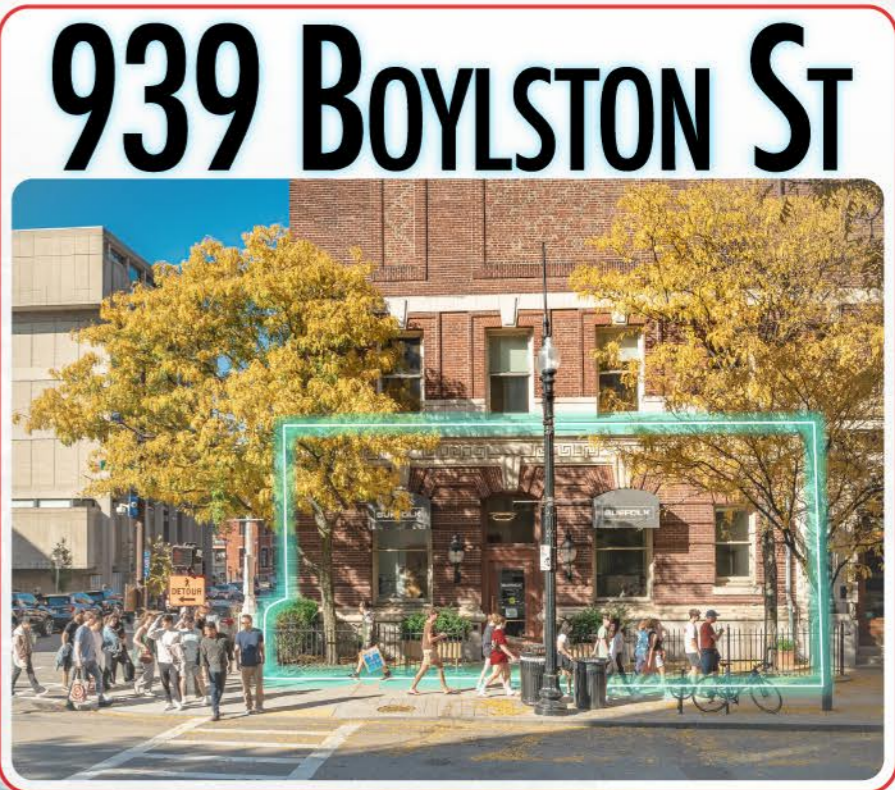
**1000 BOYLSTON ST PROJECT APPROVED**  
440,000 SF MIXED-USE  
45,000 SF RETAIL + REST.  
108 CONDO UNITS  
175 PARKING SPACES

**975 BOYLSTON ST UNDER REVIEW**  
423,000 SF MIXED-USE  
125 APARTMENTS  
300,000 SF OFFICE + LAB

patagonia  
VANS  
ARCTERYX  
TJ MAXX  
pure barrrs  
STARBUCKS  
FALL RAVEN

# 939 Boylston St

BACK BAY - BOSTON, MA



# 939 BOYLSTON ST



- TJ-maxx
- ARC'TERYX
- patagonia
- FJALL RAVEN
- VANS "OFF THE WALL"
- THE NORTH FACE
- DILLON'S
- THE CAPITAL G.R.I.L.L.E.
- EATALY
- DelFrisco's DOUBLE EAGLE STEAKHOUSE
- UNDER ARMOUR
- TESLA
- CHASE
- FRETTE 1860
- RAMSAY'S KITCHEN BY GORDON RAMSAY
- FENWAY PARK 37,000 SEATS 450 EVENTS / YR
- MUJI 無印良品
- Reformation
- UNI QLO
- DIESEL
- BURTON
- Champion
- Abercrombie & Fitch
- Ministry of Supply
- Tracksmith NEW ENGLAND
- TRADER JOE'S
- FREE PEOPLE
- Santander
- Bank of America
- Walgreens
- T-Mobile
- topdrawer
- Amorino
- Fidelity
- SUITSUPPLY
- Serafina

vineyard vines martha's vineyard

**POLO** RALPH LAUREN

Saks Fifth Avenue CANADA GOOSE

CLUB MONACO ARITZIA

SHINOLA The Cheesecake Factory

star market Eddie V's earls KITCHEN + BAR

# 939 Boylston St

BACK BAY - BOSTON, MA

# 939 BOYLSTON ST

**Sheraton**  
HOTELS & RESORTS  
1,200 ROOMS  
OPENED 1965

**FOUR SEASONS**  
215 ROOMS + 160 CONDOS  
OPENED 2019

**Hilton**  
400 ROOMS  
OPENED 1982

**Northeastern University**  
28,000 UNDERGRAD + GRAD STUDENTS  
3,000 PROFESSORS & FACULTY  
73-ACRE URBAN CAMPUS

**Marriott**  
BOSTON COPLEY PLACE  
1,150 ROOMS  
OPENED 1984

**HYNES CONVENTION CENTER**  
250,000 CONV.  
VISITORS / YEAR

**Berklee**  
College of Music  
8,000 UNDERGRAD + GRAD STUDENTS  
600 PROFESSORS & FACULTY  
297 ALUMNIS GRAMMY WINS

**MANDARIN ORIENTAL**  
150 ROOMS + 50 CONDOS  
OPENED 2007

**LENOX**  
The Original Boutique Hotel  
215 ROOMS  
OPENED 1900



**Berklee**  
College of Music

**CAFFÈ NERO**  
**Wendy's**  
**Tatte**  
**LOVE ART SUSHI**  
**Citizens Bank**  
**PAVEMENT**  
**WHOLE FOODS MARKET**  
**DUNKIN' DONUTS**

**1001 BOYLSTON ST**  
UNDER CONSTRUCTION  
39,000 SF RETAIL + REST.  
450,000 SF OFFICE + LAB  
**CarGurus**  
**LEGO**  
**citizen**  
100K SF HQ 399 ROOMS

**THE ELIOT HOTEL**  
95 ROOMS  
OPENED 1925

**PRUDENTIAL CENTER**  
2,960,000 SF OFFICE | 630,000 SF RETAIL | 3,700 PARKING SPACES

**ROPES & GRAY**  
331,000 SF OFFICE

**BlueCross BlueShield**  
330,000 SF OFFICE

**MFS**  
INVESTMENT MANAGEMENT  
280,000 SF OFFICE

**AG ANALYSIS GROUP**  
192,000 SF OFFICE

**NATIXIS**  
128,000 SF OFFICE

**bxp Boston Properties**  
100,000 SF OFFICE

**Saks Fifth Avenue**  
**Del Frisco's**  
**EATALY**

**UNDER ARMOUR**  
**The Cheesecake Factory**  
**earls**

**TESLA**  
**Eddie V's**  
**star**

**Fidelity**  
**FRETTE**  
**CHASE**  
**Bank of America**  
**Apple**  
**Alo's Louie's**  
**Serafina**  
**BoConcept**  
**SHAKE SHACK**  
**Amorino**  
**GRE.Co**  
**topdrawer**  
**SUITSUPPLY**

**FREE PEOPLE**  
**THE CAPITAL**  
**Ministry of Supply**  
**BRANDY MELVILLE**  
**BURROW**  
**MOTHER JUICE**  
**Tracksmith**  
**PAVEMENT**

**Abercrombie & Fitch**  
**THE NORTH FACE**  
**VANS**  
**patagonia**  
**ARC'TERYX**  
**BURTON**  
**Reformation**  
**MUJI**  
**無印良品**  
**TJ-MAXX**  
**VITALE**  
**Champion**  
**pure barre**  
**Madewell**  
**UNI QLO**  
**Starbucks**

**1000 BOYLSTON ST**  
PROJECT APPROVED  
440,000 SF MIXED-USE  
45,000 SF RETAIL + REST.  
108 CONDO UNITS  
175 PARKING SPACES

**BOSTON ARCHITECTURAL COLLEGE**  
1,000 STUDENTS  
300 PROFESSORS & STAFF

**MIT**  
0.3 MILES NORTH  
HARVARD BUSINESS SCHOOL  
1.6 MILES WEST  
HARVARD UNIVERSITY  
1.8 MILES WEST

**975 BOYLSTON ST**  
UNDER REVIEW  
423,000 SF MIXED-USE  
125 APARTMENTS  
300,000 SF OFFICE + LAB

**BOSTON UNIVERSITY**  
34,000 STUDENTS  
15.00 PROFESSORS & STAFF  
0.1 MILES WEST

**EASTERN LAND COMPANY**  
**FORLEASEBOSTON.COM**  
**617.286.3830**